



(General luminaire & emergency light)



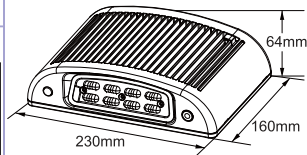
Standard Feature

- CE, CB, SAA certificate
- Die-Casting Housing, Color optional
- Quick connection and easy installation
- Outdoor Lighting with Emergency Back Up
- Power Consumption 17W ACEM mode
- LG SMD 3535 LED CCT 5000K, 8pcs, L70>72,000 hours
- 220-240V 50/60Hz for ACEM model
- Ni-Mh battery
- 1650lm for AC model, 600lm for emergency mode
- Photo sensor as Basic and PIR sensor as option optional
- Wall mounting
- Auto test function optional

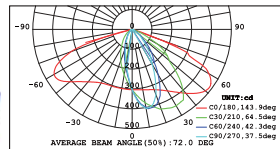
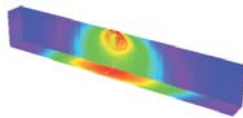
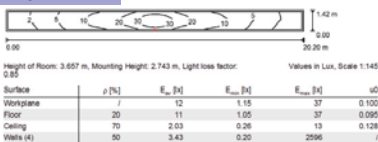
Product specification

Input Voltage	220 - 240VAC, 50/60Hz
Power consumption	17W Max
Color temperature	5000K, 3000K
CRI	70
Beam angle	144 deg for pathway, 38 deg for wide
Output Lumen	1650 lm for AC mode, 600lm for EM mode(5000K)
Battery	Ni-Mh 7.2V 2000mA (for 1 hour) Ni-Mh 7.2V 3300mA (for 3 hour)
Ingress protection	IP 65
Test function	Manual test or Auto test (optional)

Optical specification



Light Output



Auto test function : See below ordering guide.

Ordering Guide

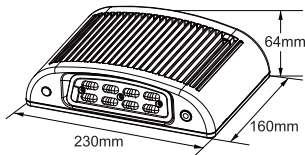
Model No	Housing color	CCT	Duration	Test
EL93110017	Black	3000K	1 hour	Manual test
EL93110017	White	3000K	1 hour	Manual test
EL93210017	Dark bronze	3000K	1 hour	Manual test
EL93210017	Silver	3000K	1 hour	Manual test
EL93310017	Black	3000K	1 hour	Manual test
EL93010017	White	3000K	1 hour	Manual test
EL93110017	Dark bronze	3000K	1 hour	Manual test
EL93210017	Silver	3000K	1 hour	Manual test
EL95010017	Black	5000K	3 hours	Manual test
EL95110017	White	5000K	3 hours	Manual test
EL95210017	Dark bronze	5000K	3 hours	Manual test
EL95310017	Silver	5000K	3 hours	Manual test
EL95010017	Black	5000K	3 hours	Manual test
EL95110017	White	5000K	3 hours	Manual test
EL95210017	Dark bronze	5000K	3 hours	Manual test
EL95310017	Silver	5000K	3 hours	Manual test



MDECO (General Lighting)



Optical specification



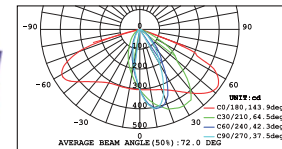
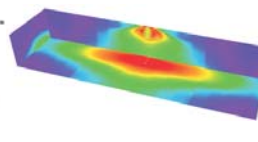
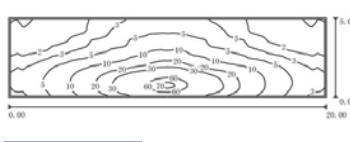
Standard Feature

- CE, CB, SAA certificate
- Die-Casting Housing, Color optional
- Quick connection and easy installation
- General lighting for outdoor use
- LG SMD 3535 LED CCT 5000K, 8pcs, L70>72,000 hours
- 120-240V for AC model
- 1650lm for AC model, 100lm/W
- Photo sensor as Basic and PIR sensor as option optional
- Wall mounting

Product specification

Input Voltage	120-240VAC, 50/60Hz
Power consumption	15W Max
Color temperature	5000K, 3000K
CRI	70
Beam angle	144 deg for pathway, 38 deg for wide
Output Lumen	1650 lm(5000K)
Ingress protection	IP 65

Light Output



Ordering Guide

Model No	Housing color	CCT	Type	Remark
EL05010117	Black	5000K	General lighting	Photo sensor
EL05110117	White	5000K	General lighting	Photo sensor
EL05210117	Dark bronze	5000K	General lighting	Photo sensor
EL05210117	Silver	5000K	General lighting	Photo sensor
EL05010917	Black	5000K	General lighting	PIR and Photo sensor
EL05110917	White	5000K	General lighting	PIR and Photo sensor
EL05210917	Dark bronze	5000K	General lighting	PIR and Photo sensor
EL05310917	Silver	5000K	General lighting	PIR and Photo sensor
EL03010117	Black	3000K	General lighting	Photo sensor
EL03110117	White	3000K	General lighting	Photo sensor
EL03210117	Dark bronze	3000K	General lighting	Photo sensor
EL03310117	Silver	3000K	General lighting	Photo sensor
EL03010917	Black	3000K	General lighting	PIR and Photo sensor
EL03110917	White	3000K	General lighting	PIR and Photo sensor
EL03210917	Dark bronze	3000K	General lighting	PIR and Photo sensor
EL03310917	Silver	3000K	General lighting	PIR and Photo sensor